



PARIS, France -

- May 30 - June 2, 1945

The Eiffel Tower and
the Champs-de-Mars.

This was taken from the
terrace of the Palais de
Chaillot looking down the
Champs-de-Mars toward
the École Militaire, which
you can see at the far
end.

(When we climbed the
tower we went to the second
platform, not quite halfway up.
I wish we could have gone all the
way to the top, but they wouldn't
let us.)



- Paris - May 30 - June 2, 1945

The Palais de Chaillot and water gardens in front of it. You can get some idea of the size of the "Palace" by the people on the upper terrace in the middle of the picture. Below that terrace is the Theater where I went to the concert.

(The water display wasn't going when I took this picture. They were cleaning the pools or something.)



- Paris - May 30 - June 2, 1945

The Arc de Triomphe (looking down
the Avenue de Champs Elysées),



Paris - May 30 - June 2, 1945

The Tomb of the Unknown French Soldier. This is in the middle of the Arc de Triomphe. That wreath at the end of it was put there by the United States Ambassador on Memorial Day.



Paris - May 30 - June 2, 1945

The Église Saint-Louis
and The Hotel des Invalides.
The tomb of Napoleon
is under The dome of
this church. (It's not
used as a church now
but as a memorial to
France's great men. The
tombs of other great
Frenchmen are here also.)

(That bus in the right foreground
with all the G.I.'s headed toward
it is the one we took the tour in.)



Paris - May 30 - June 2, 1945

This is me with the Sacré-Coeur de Montmartre in the background. There are broad marble steps which you can't see here winding up the hill to the church. You can see all over Paris from the terrace around the monument, and it's quite a view.



- Paris - May 30 - June 2, 1943

The Place de l'Opéra and the Académie Nationale de Musique (or Opera House). This square is one of the busiest parts of Paris, as you can see. (This is where I went to the Opera.)



Paris - May 30 - June 2, 1945

This is Huff and me
sitting on the wall of
the terrace of the Palais
de Chaillot.



Paris - May 30 - June 2, 1945

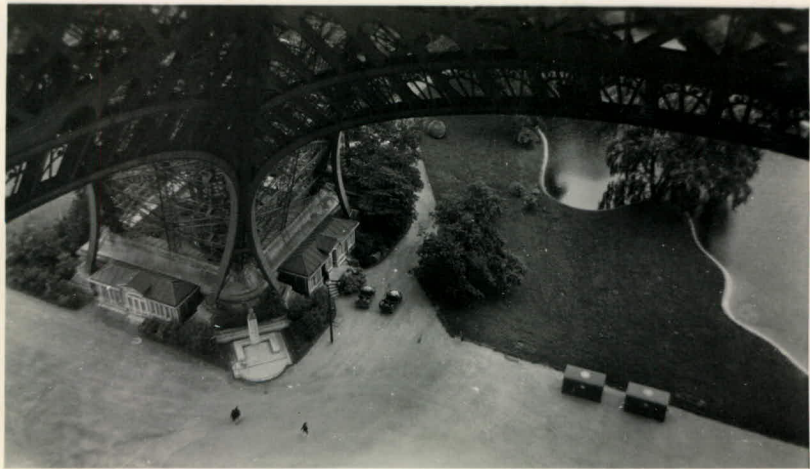
Looking across the Seine from the second platform of the Eiffel Tower to the Palais de Chaillot.

(That mark on the left was due to a flaw in the negative.)



Paris - May 30 - June 2, 1945

Huff and me on the first platform
of the Eiffel Tower. (That's the
Palais de Chaillot in the background again.)



- Paris - May 30 - June 2, 1945

Looking from the 1st platform of the Eiffel Tower down through the hole in the middle toward one of the four base pillars. Note the size of the people walking along on the ground and the two jeeps in front of the little house.

D

III



Paris - May 30 - June 2, 1945

The Notre Dame Cathedral



- Paris - May 30 - June 2, 1945

The Arc de Triomphe du Carrousel
and part of The Jardin des Tuileries.
This is taken from in front of The Louvre
Through the Arc you can see the Obelisk
in the middle of The Place de la Concorde
at the far end of the Tuileries Gardens
and on beyond the big Arc de Triomphe,
(two miles away)